

# "The Jobs"

## Small Commercial / Near Coastal

- Coxswain
- Deckhand
- Marine Engine Driver
- Master

## Deep Sea & Blue Water

- Integrated Officer
- Engineer Officer
- Deck Officer
- Marine Cook
- Steward

## Offshore Oil & Gas

- Deep Sea and Blue Water

## Towage & Salvage

- Tug Master
- Salvage Master
- Salvage Crew
- Integrated Rating
- Deckhand/General Purpose Hand
- Engineers

## Cruise Ship and Super Yacht

- Deck Officers
- Engineer Officers
- Integrated Rating

## Royal Australian Navy

- <http://www.defencejobs.gov.au/navy/>

## Shore-based Roles

- Tug Master
- Marine Pilot
- Stevedores
- Ship Managers
- Ship Agents
- Harbour Master
- Maritime Regulators

## Transport and Logistics



## Marine Fabrication



## Tourism



## Fishing



## Tall Ships



## Marine Research



## Ship Building ASC Port Adelaide



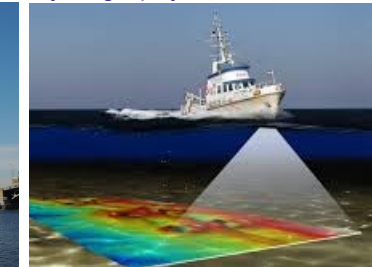
## Recreational Industry



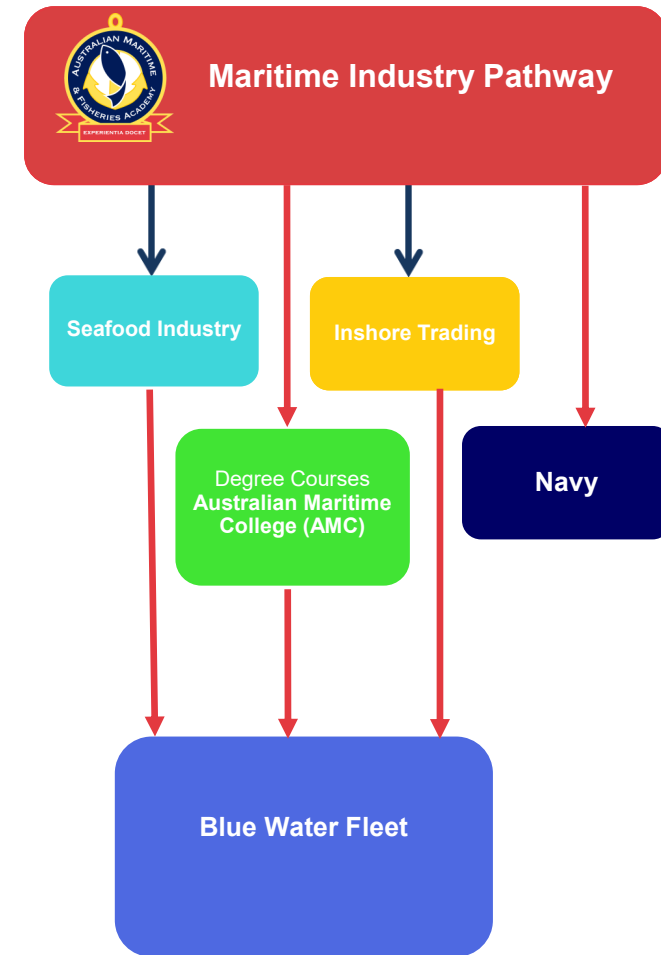
## Tourism—Cruise Ships



## Hydrography



## MIP through SACE Pathway Map



## Regulatory Certificates of Competency

The Academy delivers the educational component required to receive the relevant vocational qualification. However, students should be aware that most Academy courses require an additional application to AMSA (Australian Maritime Safety Authority) before a maritime licence is issued by the Government.

The Academy has no authority to deal with any matters that are handled by AMSA, including the calculation of sea time, the processing of applications for maritime licences and the fees charged. Students should contact AMSA directly to determine what they are required to do to obtain their maritime licence.

**AMSA Connect 1800 627 484**

[www.amsa.gov.au](http://www.amsa.gov.au)

For our full list of courses  
[www.amfa.edu.au](http://www.amfa.edu.au)



### What is sea service?

To gain a Certificate of Competency you need to complete a specified amount of service time on a vessel known as sea service.

The amount required and how it is obtained is different for each type of certificate.

A Task Book can be included in a sea service application and will reduce the required number of days of sea service.

### What is a Task Book?

A Task Book is a journal in which you can record the skills you are learning in the workplace while you are completing a competency-based training program. This can reduce the required sea time for a Certificate of Competency.

**Task Books are available at the Academy**

For further information



### AMFA CONTACTS

**Port Adelaide Campus**  
Dockside, North Parade  
Port Adelaide SA 5015

**Port Lincoln Campus**  
9 North Quay Blvd  
Port Lincoln SA 5606

**Postal Address**  
PO Box 2099  
Port Adelaide SA 5015

**Postal Address**  
PO Box 2001  
Port Lincoln SA 5606

**Ph:** (08) 8303 2780  
**E:** [info@amfa.edu.au](mailto:info@amfa.edu.au)

**Ph:** (08) 8683 4888  
**E:** [mvalue@amfa.edu.au](mailto:mvalue@amfa.edu.au)



[www.amfa.edu.au](http://www.amfa.edu.au)

Toll Free 1800 636 068



# "THE JOBS"

"The journey of a thousand miles  
begins with one step"  
Lao Tzu



## AUSTRALIAN MARITIME & FISHERIES ACADEMY RTO #0649



Port Adelaide campus



Port Lincoln campus